

MOTO ELITE/LITE PREVENTER MODEL - MCS_3P2CDE



CUSTOMER CARE
+91 91596 34445



YouTube

The **ELITE/LITE PREVENTER** is a digital device designed to protect 3-phase motor from dryrun amps, overload amps, phase failure, and phase reversal. It offers accurate monitoring and control of your motor performance, ensuring efficient operation and preventing damage. It is suitable for submersible pumps, and HVAC systems that utilize 3-phase motors.

SPECIFICATION:

MODEL	: MCS_3P2CDE
TYPE	: DIGITAL
BOX	: METAL BOX
COLOUR	: BLUE, WHITE
INPUT SUPPLY	: 3-PHASE
OPERATING VOLTAGE	: 440 VAC
PACKAGE CONTAINS	: 1x ELITE PREVENTER, 2x CT COIL 40A, 1x USER MANUAL, 1x RA CONNECTOR.

FEATURES:

- 7SEGMENT LED DISPLAY.
- SINGLE PHASE PREVENTER.
- HIGH & LOW VOLTAGE PROTECTION.
- PHASE FAILURE & PHASE REVERSAL PROTECTION.
- DIFFERENT VOLTAGE PROTECTION.
- OVER LOAD & DRY RUN AMPS PROTECTION.
- CURRENT SENSING PHASE -2(2CT).
- INDIVIDUAL AMPS SETTINGS OPTION.
- VOLTAGE & AMPS CALIBRATION OPTION.
- CYCLIC TIMER WITH RESUME OPTION.
- YIELD TIMER OPTION.
- AUTO START OPTION.
- STAR DELTA TIMER OPTION.
- WATER LEVEL CONTROLLER OPTION.
- 12V OUTPUT FOR KIRTI RELAY OPTION.
- ROTOR LOCK OPTION.
- PUMP ERROR & FLOAT FAULT OPTION.

NOTE: 12V OUTPUT AND ST/WLC OPTION NOT INCLUDED IN LITE MODEL PREVENTER

ADVANTAGES:

- SUITABLE FOR ALL BUTTON STARTERS.
- DIGITAL VOLT & AMP METER.
- ACCURACY WITH TRIPPING & DISPLAY FAULT STATUS.
- USER FRIENDLY TIMER AND VOLTAGE SETTINGS.
- AUTO / MANUAL MODE OPERATION.
- EASY INSTALLATION AND MAINTENANCE.
- DISPLAY MOTOR RUN HISTORY AND RUNNING STATUS.

DESCRIPTION:



1. SEQUENCE LED.
2. AUTO LED.
3. DC LED.
4. 7SEGMENT LED DISPLAY.
5. AUTO/MANUAL SWITCH.
6. 2-3PHASE/3PHASE SWITCH.
7. SET BUTTON.
8. INCREMENT BUTTON.
9. DECREMENT BUTTON.
10. INPUT/OUTPUT CONNECTOR.
11. KIRTI RELAY OUTPUT CONNECTOR.

MANUAL FUNCTION:

Set the auto/manual switch in the manual position, and then turn on the power supply. Now controller is ready to monitor the power supply condition and sequence led will glow. Now use green pushbutton to turn on the motor and red push button to turn off the motor. The elite preventer will turn off the motor when there are dry amps, overload amps, or voltage fluctuation conditions.

AUTO FUNCTION:

Set auto/ manual switch into auto position, and then turn on power supply. Now controller is ready to monitor the power supply condition and sequence led will glow. In auto function, a cyclic timer, which will allow the user to switch ON or OFF the motor on user's set time. Auto start timer will be enabled only in auto mode, and it is used to turn on the motor automatically when the power is on, based on user set time. The elite preventer will turn off the motor when there are dry amps, overload amps and voltage fluctuation condition.

2P/3P SWITCH FUNCTION:

A 2P/3P switch is used to set 2Phase/3Phase mode or 3Phase mode only function. If 2Phase/3Phase mode is enabled the motor will turn on in 2Phase or 3Phase condition. If 3P mode is enabled the motor will turn on only in 3phase condition.

WIRING DIAGRAM:

Fig 1: 3PHASE DOL STARTER CONNECTION DIAGRAM.

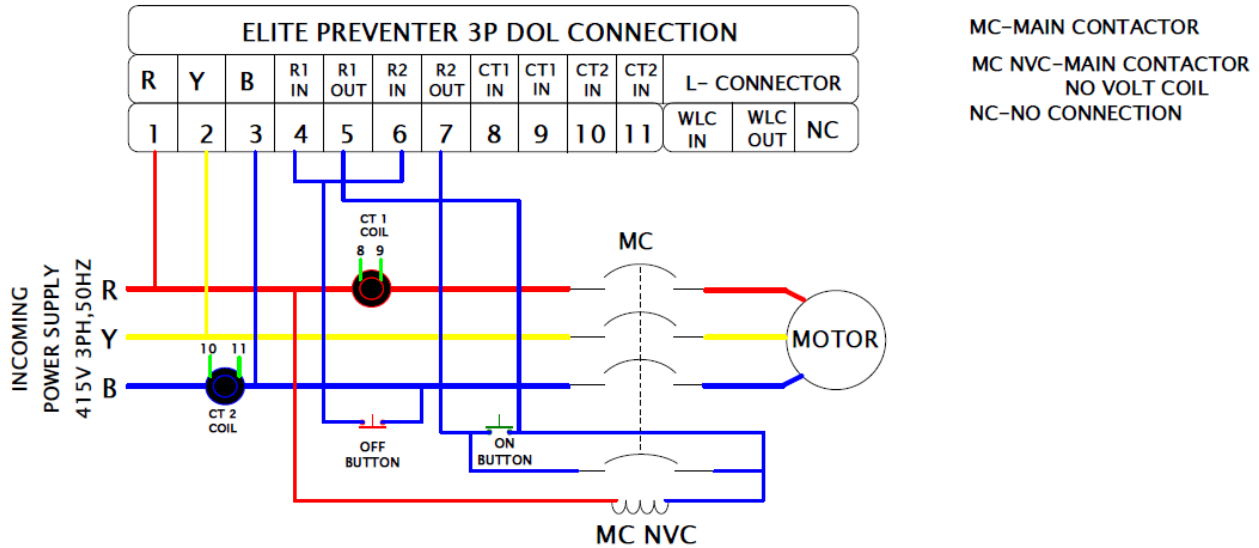


Fig 2: 3PHASE STAR DELTA STARTER CONNECTION DIAGRAM.

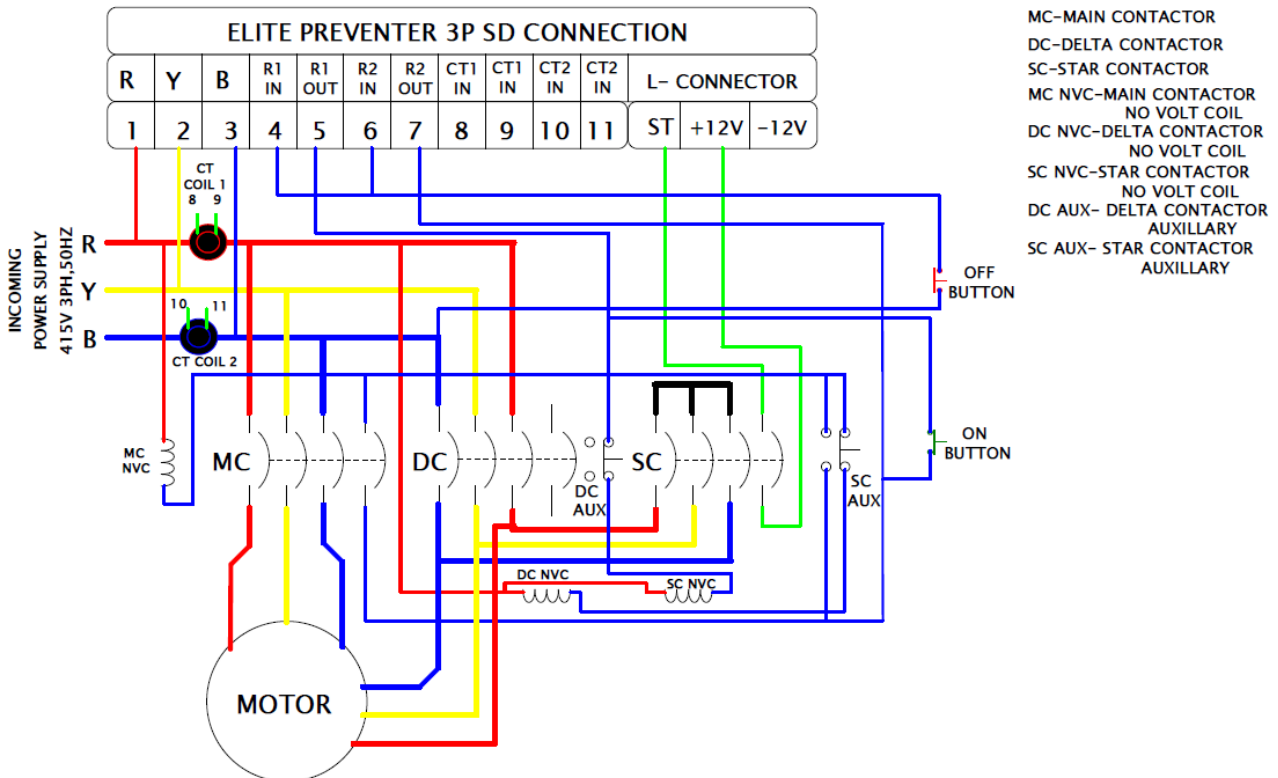
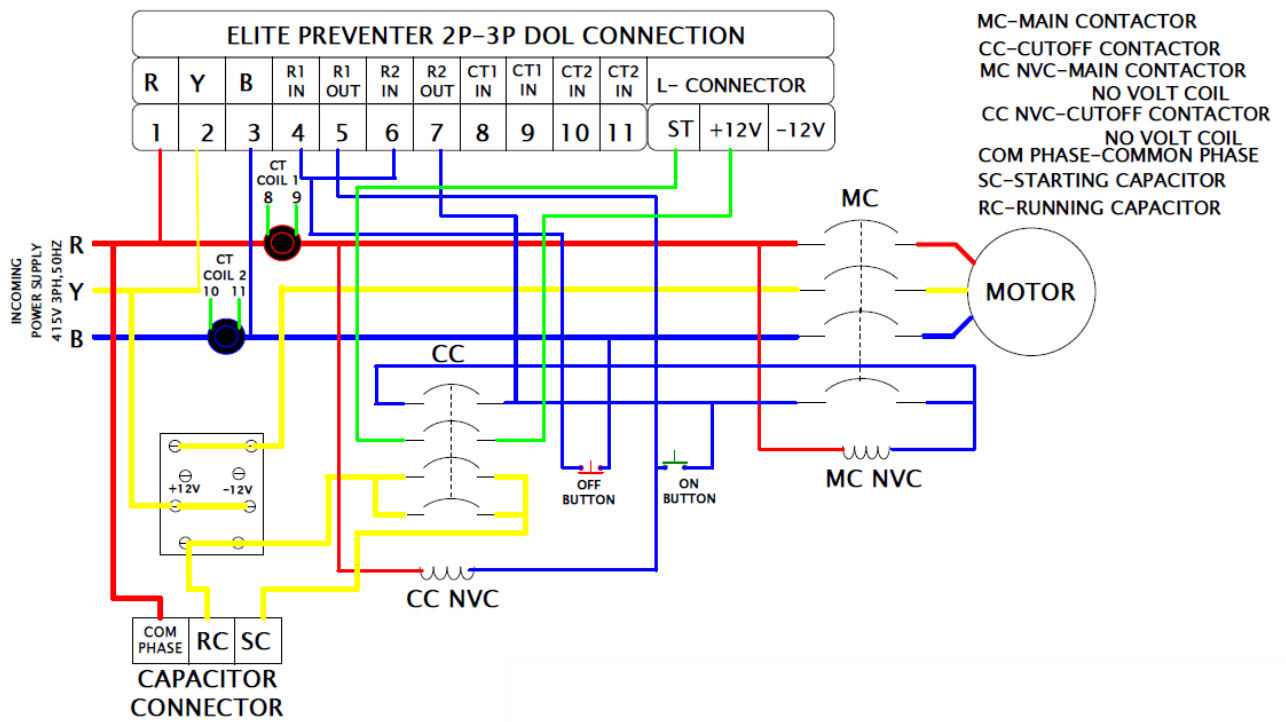
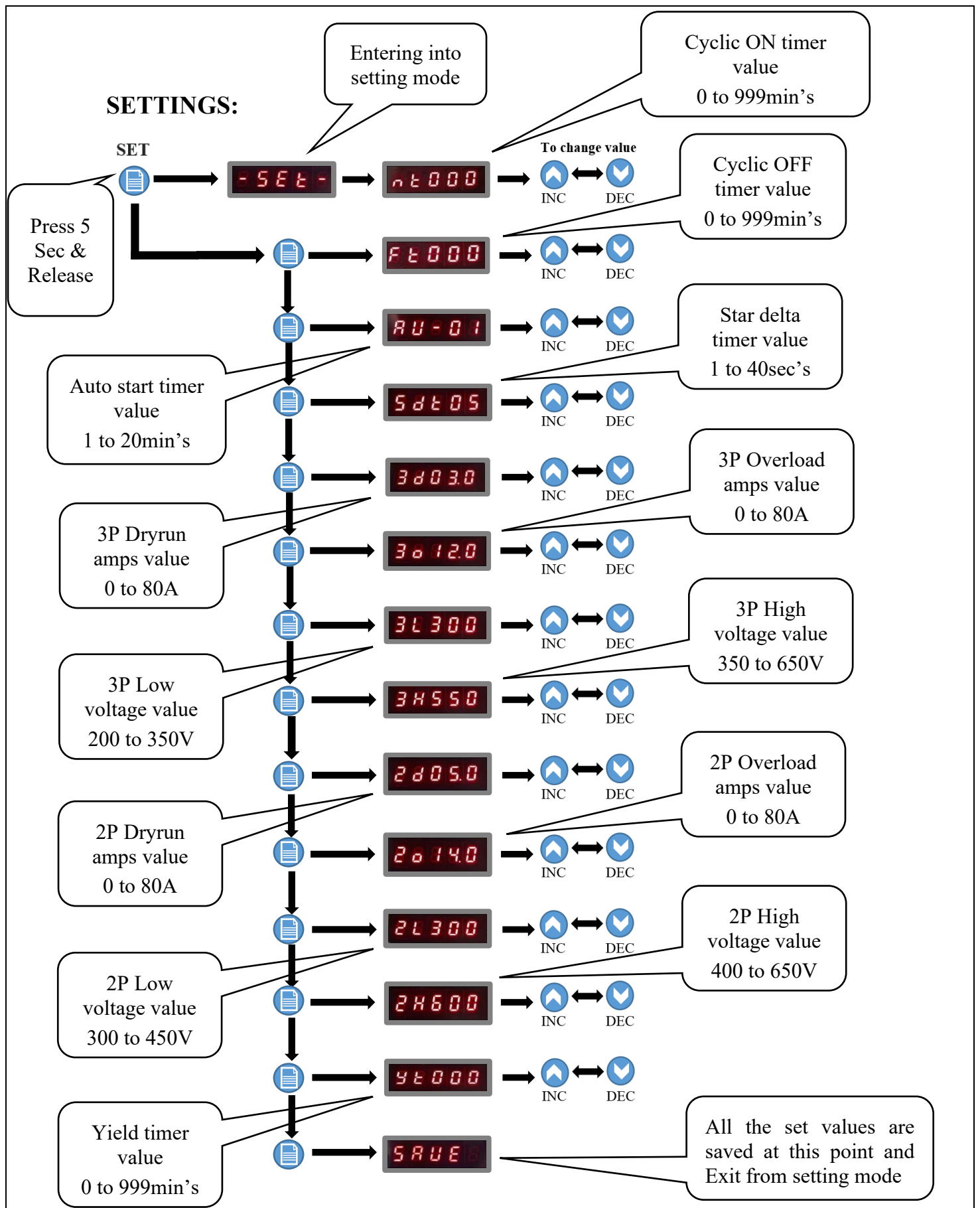


Fig 3: 2PHASE / 3PHASE DOL STARTER CONNECTION DIAGRAM.



NOTE: ALWAYS DISCONNECT POWER BEFORE INSTALLATION OR MAINTENANCE.



NOTE: If TWO PHASE switch is ON then 2PHASE settings will display in settings menu (step 9 to step 12). Else 2PHASE settings will not display in settings menu (step 9 to step 12).

A-SET MODE:

- Long Press DEC Button while motor on in 3phase mode to set the 3PH DRYRUN value for 80% and 3PH OVERLOAD value for 120% of reading value (AS-3P).
- Long Press DEC Button while motor on in 2phase mode to set the 2PH DRYRUN value as 80% and 2PH OVERLOAD value for 130% of reading value (AS-2P).



WATER LEVEL CONTROLLER MODE:

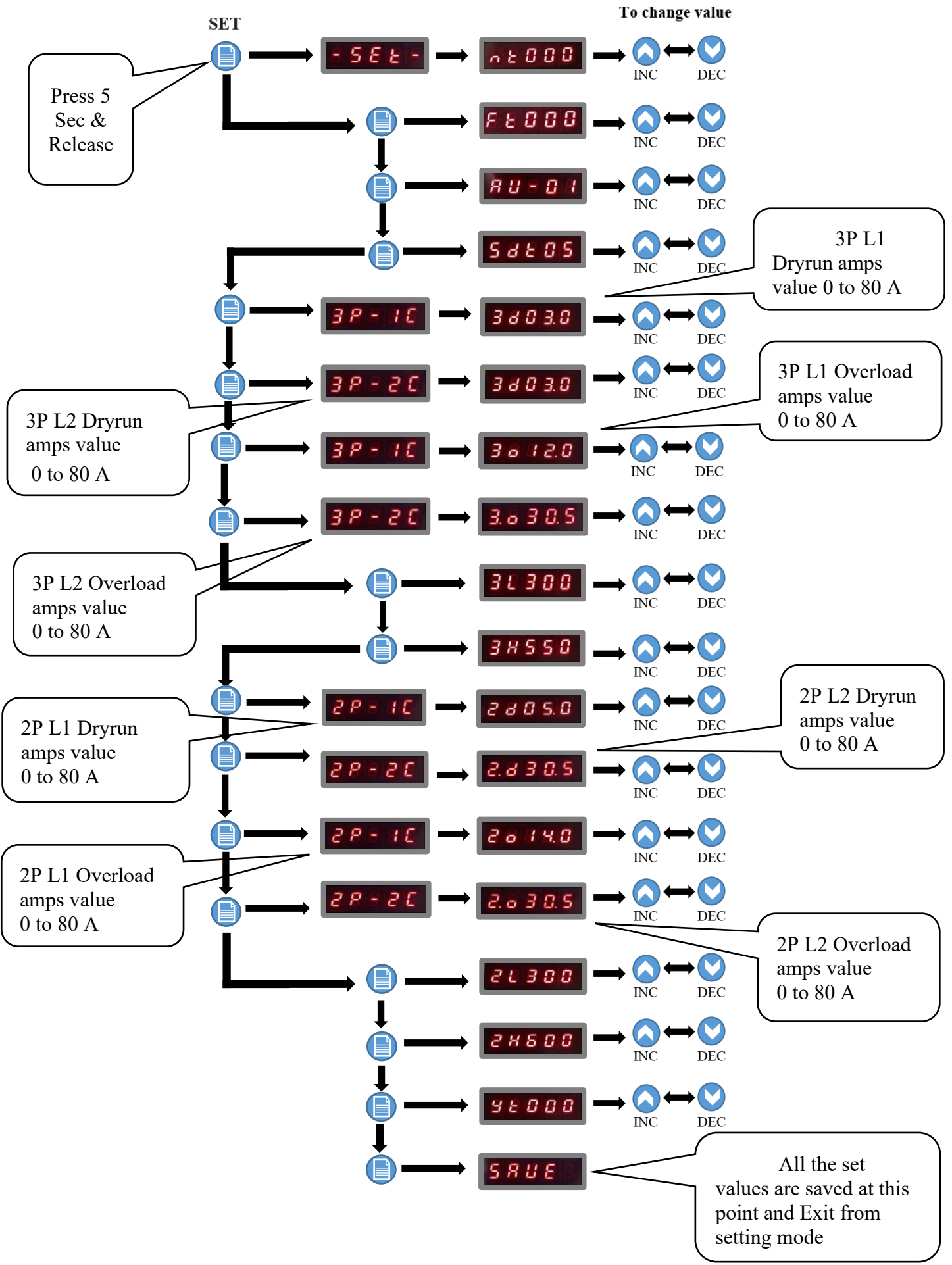
- Long Press DEC Button while motor off to enable the Water Level Option.
- Long Press DEC Button while motor off to disable the Water Level Option.












INDIVIDUAL AMPS SETTINGS:

- In default condition, Common amps is enabled (CA-E). To set individual amps common amps should be disabled in the E-SEt settings.
- Long press INC & DEC button for 5 sec to enter into E-SEt settings, then select the common amps settings (CA-d).
- All the step 1,2,3,4 are common then step 5 & 6 changed as shown below, then step set 7 & 8 are common then step 9 and step 10 will be changed as shown below.

INDIVIDUAL AMPS SETTINGS:



FAULT INDICATION AND SOLUTION:

DISPLAY	ABBREVIATION	SOLUTION
	DRYRUN AMPS FAULT	1. CHECK WATER LEVEL OF BOREWELL. 2. CHECK SETTINGS.
	OVERLOAD AMPS FAULT	1. CHECK MOTOR CONNECTION. 2. ENSURE GATEVALVE IS OPEN.
	AMPS PROBLEM FAULT	1. CHECK CT COIL. 2. CHECK MOTOR WIRE.
	LOW VOLTAGE FAULT	1. CHECK INPUT VOLATGE.
	HIGH VOLTAGE FAULT	1. CHECK INPUT VOLATGE.
	DIFFERENT VOLTAGE FAULT	1. CHECK R, Y & B SEQUENCE. 2. INPUT VOLTAGE. 3. PHASE FAILURE.
	ROTOR LOCK FAULT	1. CHECK MOTOR.
	FLOAT FAULT	1. CHECK FLOAT SENSOR.
	PUMP ERROR FAULT	1. CHECK MOTOR.

Thank you for choosing the **ELITE/LITE PREVENTER**. This user manual provides comprehensive information to help you operate and maintain your device effectively. If you have any further questions or require technical support, please contact our customer service team.



WARRANTY:

CUSTOMER NAME:

MOBILE NUMBER:

ADDRESS:

.....

TYPE: ELITE PREVENTER / LITE PREVENTER

SERIAL NO: BATCH NO:

E-MAIL:

PURCHASE DATE:

DEALER DETAILS:

***NOTE:**

WARRANTY NOT APPLICABLE FOR PHYSICAL DAMAGE, WATER DAMAGE, NATURAL DISASTER, HIGH VOLTAGE FROM MAINS AND THIRD-PARTY REPAIRS.

----- NOTES -----

MANUFACTURED BY:

MOTO CONTROL SYSTEM

186-190,2nd Floor, Dr. Radha Krishnan Street, Tatabad, Coimbatore, Tamil Nadu 641012.

E-mail: info@motocontrolsystem.com Phone: 0422 4334445

Web: www.motocontrolsystem.com